

Analysis Sweet Birch Essential Oil

Laboratoire
PhytoChemia



Plus que des analyses... des conseils



Date : August 2, 2017

SAMPLE IDENTIFICATION

Internal code : 17G28-FSE3-1-CC

Customer identification : Sweet Birch - USA - 287689

Type : Essential oil

Source : *Betula lenta*

Customer : Flowers Shining Everywhere Inc.



ANALYSIS



Method : PC-PA-001-15E06, "Analysis of the composition of a liquid essential oil by GC-FID" (in French).

+ **Identifications** double-checked by GC-MS

Analyst : Sylvain Mercier, M. Sc., chimiste

Analysis date : 2017-08-02



Checked and approved by :

Alexis St-Gelais, M. Sc., chimiste 2013-174



Note: This report may not be published, including online, without the written consent from Laboratoire PhytoChemia.

This report is digitally signed, it is only considered valid if the digital signature is intact.



IDENTIFIED COMPOUNDS

Identification	Column: BP5			Column: WAX			Molecular Class
	R.T.	R.I.	%	%	R.I.	R.T.	
Linalool	6.74	1111	0.03	0.02	1486	7.89	Monoterp. alcohol
Methyl salicylate	9.84	1215	99.74	99.64	1672	14.13	Phenolic ester
Ethyl salicylate	12.57	1275	0.11	0.11	1701	15.59	Phenolic ester
Aromadendrene	22.11	1422	0.02	0.02	1546	9.31	Sesquiterpene
Total identified			99.9%	99.79%			

*: Two or more compounds are coeluting on this column

[xx]: Duplicate percentage due to coelutions, not taken account in the identified total

Note: no correction factor was applied

OTHER DATA

Physical aspect : Clear liquid

Refractive index : 1.5348 ± 0.0003 (20 °C)

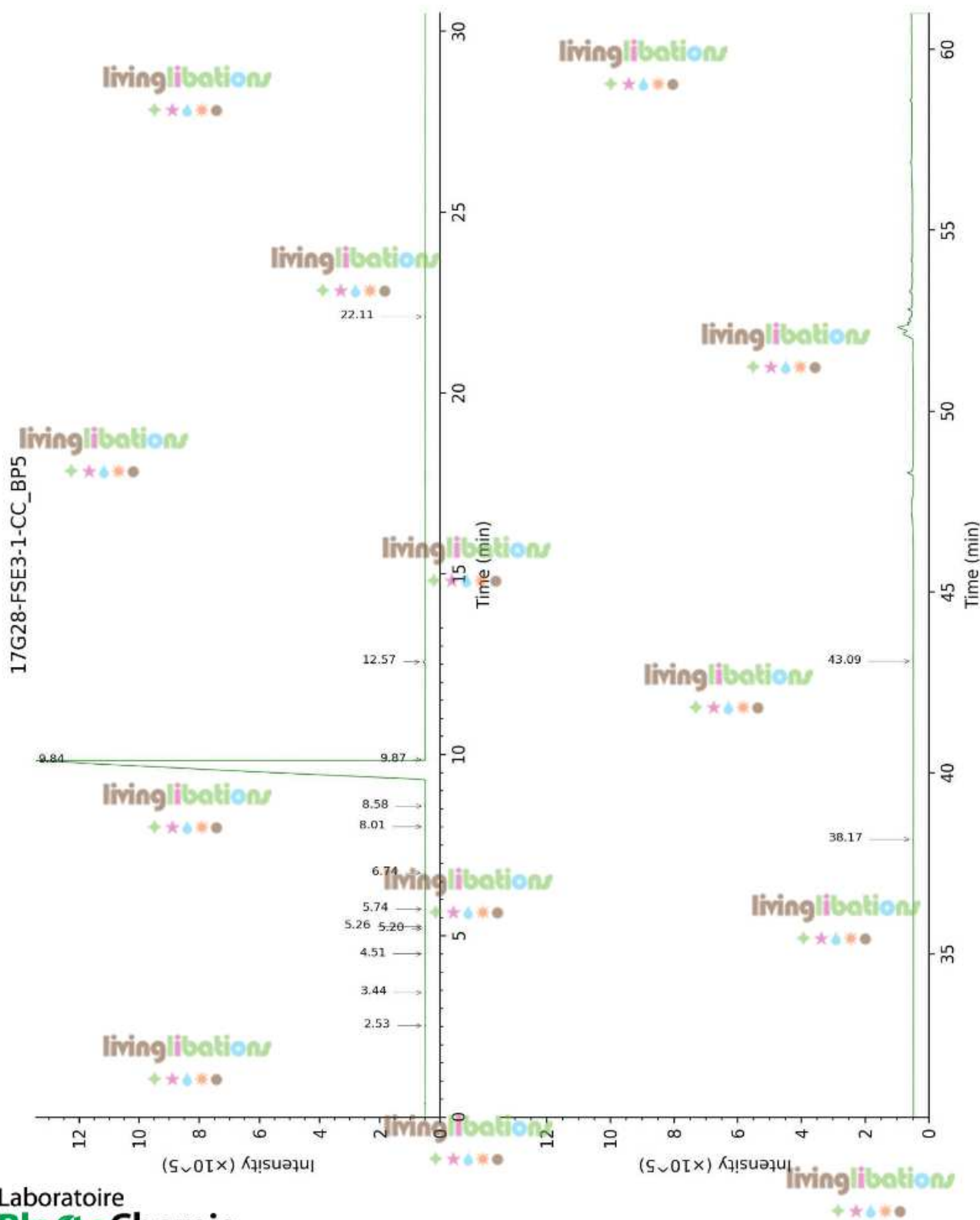
CONCLUSION

No adulterant, contaminant or diluent were detected using this method.

Essential oil, *Betula lenta*
Internal Code: 17G28-FSE3-1-CC

Customer Identification:
Sweet Birch - USA - 287689

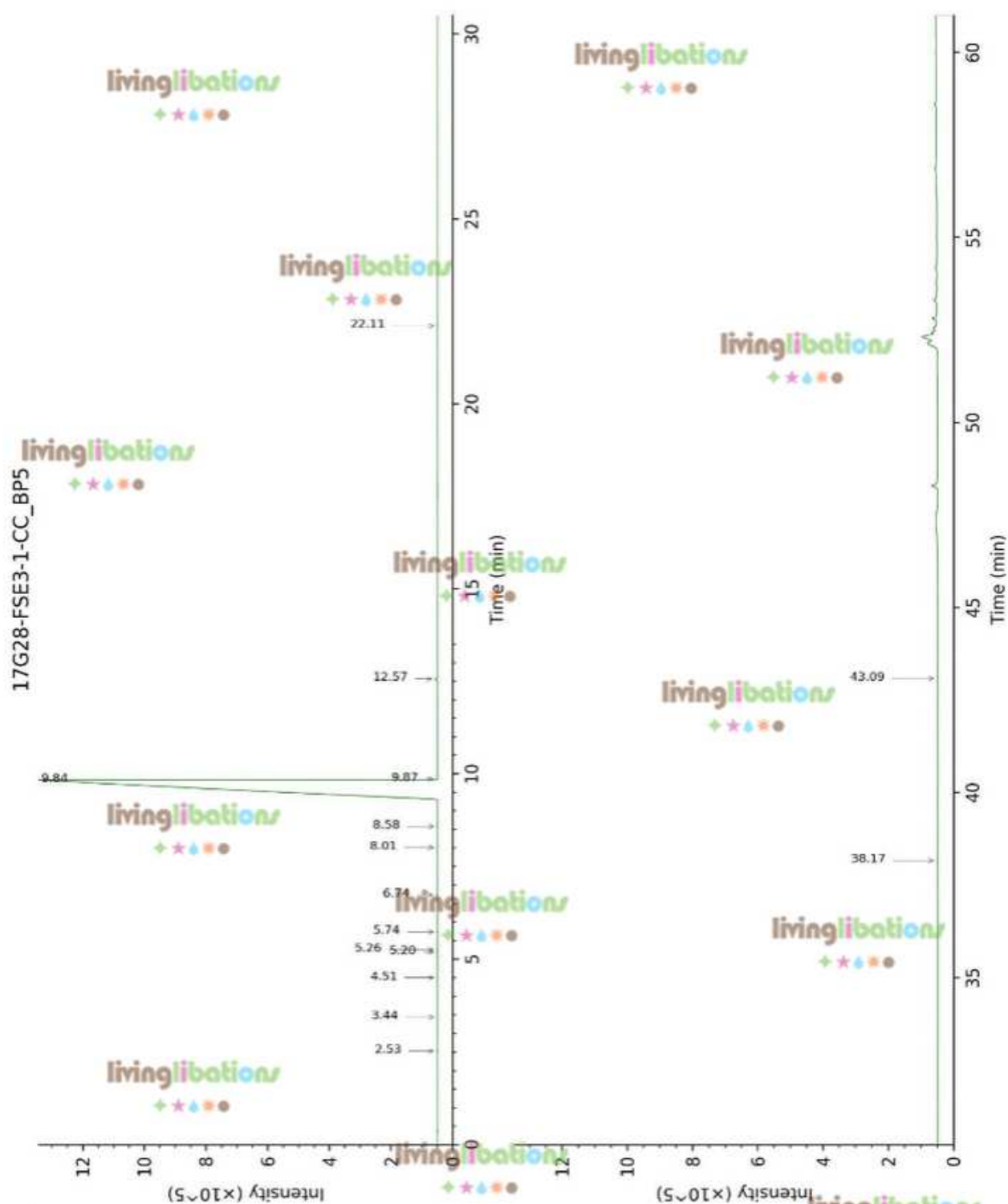
Report prepared for
Flowers Shining Everywhere Inc.



Laboratoire
PhytoChemia

Plus que des analyses... des conseils

Page 3 of 4



Laboratoire
PhytoChemia

Plus que des analyses... des conseils