

Fir, Siberian Essential Oil

Laboratoire
PhytoChemia





Date : June 20, 2017

SAMPLE IDENTIFICATION

Internal code : 17F08-FSE25-1-DM

Customer Identification : Siberian Fir - Lot #0018893

Type : Essential oil

Source : Abies sibirica

Customer : Flowers Shining Everywhere Inc.

ANALYSIS

Method : PC-PA-001-15E06, "Analysis of the composition of a liquid essential oil by GC-FID" (in French).

Analyst : Sylvain Mercier, M. Sc., chimiste

Analysis date : 2017-06-20

Checked and approved by :



Alexis St-Gelais, M. Sc., chimiste 2013-174



Note: This report may not be published, including online, without the written consent from Laboratoire PhytoChemia.

This report is digitally signed, it is only considered valid if the digital signature is intact.



IDENTIFIED COMPOUNDS

Identification	Column: BPS			Column: WAX			Molecular Class
	R.T.	R.I.	%	%	R.I.	R.T.	
Santene	2.62	876	2.74	2.70	898	0.84	Normonoterpene
Tricyclene	3.23	917	2.40	2.44	927	0.96	Monoterpene
α -Thujene	3.31	923	0.08	0.33	959	1.09	Monoterpene
α -Pinene	3.44	930	12.72	12.35	954	1.07	Monoterpene
Camphene	3.75*	949	23.74	23.57	1016	1.35	Monoterpene
α -Fenchene	3.75*	949	[23.74]	0.02	996	1.26	Monoterpene
Thuja-2,4(10)-diene	3.80*	952	0.01	0.02	1062	1.78*	Monoterpene
Sabinene	4.12*	971	0.06	[0.02]	1062	1.78*	Monoterpene
Benzaldehyde	4.12*	971	[0.06]	0.02	1434	6.80	Simple phenolic
β -Pinene	4.20	975	2.17	2.10	1046	1.64	Monoterpene
Myrcene	4.47	992	0.58	0.57	1119	2.33	Monoterpene
Δ^3 -Carene	4.79*	1009	12.21	11.90	1098	2.12	Monoterpene
α -Phellandrene	4.79*	1009	[12.21]	0.11	1111	2.25	Monoterpene
α -Terpinene	4.93	1018	0.06	0.05	1125	2.41	Monoterpene
para-Cymene	5.13	1028	0.14	0.19	1209	3.48	Monoterpene
Limonene	5.18	1031	5.08	4.53	1145	2.66	Monoterpene
β -Phellandrene	5.21	1031	3.24	3.24	1150	2.73	Monoterpene
γ -Terpinene	5.71	1060	0.10	0.09	1189	3.23	Monoterpene
Isoterpinolene	6.10	1081	0.04	0.03	1220	3.63	Monoterpene
Terpinolene	6.18	1086	0.85	0.80	1226	3.70	Monoterpene
para-Cymenene	6.38	1097	0.04	0.02	1371	5.83	Monoterpene
Linalool	6.64	1107	0.02	0.02	1486	8.04*	Monoterp. alcohol
trans-Pinocarveol	7.58	1142	0.03	0.03	1576	10.67*	Monoterp. alcohol
Camphor	7.72	1147	0.20	0.20	1428	6.72	Monoterp. ketone
Camphene hydrate	7.96	1156	0.09	29.57	1514	8.70*	Monoterp. alcohol
Pinocaryone	8.18	1164	0.01	0.02	1480	7.89	Monoterp. ketone
Borneol	8.55	1177	1.27	1.33	1621	12.29*	Monoterp. alcohol
Terpinen-4-ol	8.73	1184	0.09	0.07	1535	9.20	Monoterp. alcohol
Cryptone	9.11	1197	0.08	0.08	1570	10.44	Monoterp. ketone
α -Terpineol	9.39	1205	0.21	0.20	1629	12.57	Monoterp. alcohol
Bornyl acetate	13.08	1287	28.31*	[29.57]	1514	8.70*	Monoterp. ester
Geranyl acetate	19.25	1385	0.20	0.19	1695	15.77	Monoterp. ester
Longifolene	19.55	1389	0.11	0.13	1490	8.15	Sesquiterpene
β -Caryophyllene	20.50	1403	1.01	1.12	1526	8.99	Sesquiterpene
cis-Muurolo-3,5-diene	22.63	1428	0.03	0.03	1558	10.00	Sesquiterpene
α -Humulene	23.26	1436	0.58	0.60	1586	11.00	Sesquiterpene
Germacrene D	25.54	1463	0.03	[1.33]	1621	12.29*	Sesquiterpene
α -Muurolole	27.37	1485	0.05	0.07	1655	13.69	Sesquiterpene
β -Bisabolene	28.69	1501	0.12	0.15	1664	14.21	Sesquiterpene
trans- γ -Bisabolene	30.07	1521	0.05	0.04	1688	15.40	Sesquiterpene
Caryophyllene oxide	33.65	1571	0.10	0.07	1856	25.48	Sesquiterp. ether

Essential oil, *Abies sibirica*
Internal Code: 17F08-FSE25-1-DM

Customer Identification:
Siberian Fir - Lot #0018893

Report prepared for
Flowers Shining Everywhere Inc.

α -Bisabolol	39.40	1689	0.13	0.16	2144	39.76	Sesquiterp. alcohol
Total identified			98.58%	99.16%			

*: Two or more compounds are coeluting on this column

[xx]: Duplicate percentage due to coelutions, not taken account in the identified total

Note: no correction factor was applied

OTHER DATA

Physical aspect : Clear liquid

Refractive index : 1.4693 \pm 0.0003 (20°C)

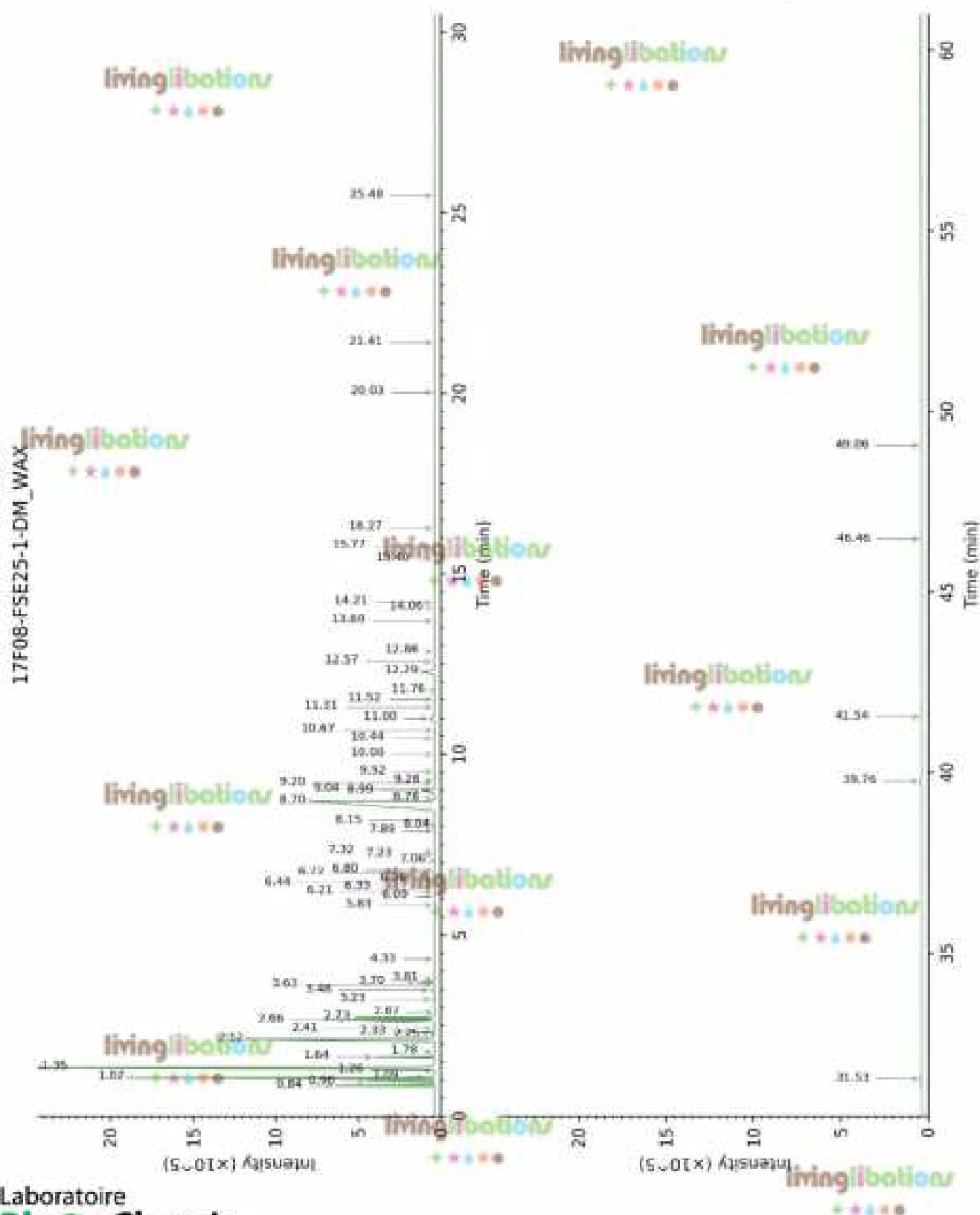
CONCLUSION

No adulterant, contaminant or diluent were detected using this method.

Laboratoire
PhytoChemia

Plus que des analyses... des conseils

Page 3 of 5





Page 4 of 5